

ROLLER ROCKER SPARES & HARDWARE



Arm ID no. is stamped on arm behind roller tip.

Set number	Single unit	Pair	Trunnion & Bearings	Shaft & Bearings	Bearing	Roller & Pin	Single Poly Lock	Adjuster & Locknut	Spacer or Pedestal	Mounting Bolt	ARM ID No	ARM ID No	ARM ID No	ARM ID No
ST 2000	ST2000-1		YT 5097		YT5060	YT 5099	YT5106				5			
ST 2001	ST2001-1		YT 5098		YT5060	YT 5099	YT5107				5			
ST 2003	ST2003-1		YT 5098		YT5060	YT 5099	YT5107				7			
ST 2004	ST2004-1		YT 5097		YT5060	YT 5099	YT5106				6			
ST 2005	ST2005-1		YT 5098		YT5060	YT 5099	YT5107				6			
ST 2007	ST2007-1		YT 5097		YT5060	YT 5099	YT5106				5			
ST 2008	ST2008-1		YT 5098		YT5060	YT 5099	YT5107				5			
ST 2009	ST2009-1		YT 5097		YT5060	YT 5099	YT5106				65			
ST 2010	ST2010-1		YT 5098		YT5060	YT 5099	YT5107				65			
ST 2012	ST2012-1		YT 5098		YT5060	YT 5099	YT5107				6			
ST 2014	ST2014-1				YT5060	YT 5099		YT 5117	YT 5049	YT 5050	65			
ST 2015	ST2015-1		YT5103		YT5060	YT 5099		YT 5117	YT 5044	YT 5045	7			
ST 2018	ST2018-1		YT5103		YT5060	YT 5099		YT 5117	YT 5044	YT 5045	7			
ST 2027	ST2027-1	ST2027-2			YT5060	YT 5099			YT 6592	YT 5050	none			
ST 2028	ST2028-1	ST2028-2			YT5060	YT 5099			YT 6591	YT 5045	none			
ST 2030	ST2030-1	ST2030-2		YT 5104	YT5060	YT 5099			YT 5049	YT 5047	5			
ST 2031	ST2031-1	ST2031-2		YT 5104	YT5060	YT 5099		YT 5117	YT 5049	YT 5047	5			
ST 2032	ST2032-1	ST2032-2		YT 5105	YT5060	YT 5099			YT 5049	YT 5050	65			
ST 2033	ST2033-1	ST2033-2		YT 5105	YT5060	YT 5099		YT 5117	YT 5049	YT 5050	65			
ST 2034	ST2034-1		YT5103		YT5060	YT 5099			YT 5044	YT 5045	7			
ST 2035	ST2035-1		YT5103		YT5060	YT 5099			YT 5044	YT 5045	7			
ST 2036	ST2036-1				YT5060	YT 5099					7			
ST 2044	ST2044-1	ST2044-2			YT5060	YT 5099			YT 6085		6			
ST 2045	ST2045-1				YT5060	YT 5099			YT 6085		6			
ST 2046	ST2046-1				YT5060	YT 5099			YT 6591	YT 5045	6			
ST 2047	ST2047-1				YT5060	YT 5099			YT 6591	YT 5045	6			
YT 5000	YT5000-1		YT 5097		YT5060	YT 5099	YT5106				36			
YT 5001	YT5001-1		YT 5098		YT5060	YT 5099	YT5107				36			
YT 5002	YT5002-1		YT 5098		YT5060	YT 5099	YT5107				37			
YT 5003	YT5003-1		YT 5098		YT5060	YT 5099	YT5107				65			
YT 5004	YT5004-1		YT 5097		YT5060	YT 5099	YT5106				86			
YT 5005	YT5005-1		YT 5098		YT5060	YT 5099	YT5107				86			
YT 5006	YT5006-1		YT 5098		YT5060	YT 5099	YT5107				77			
YT 5007	YT5007-1		YT 5097		YT5060	YT 5099	YT5106				78			
YT 5008	YT5008-1		YT 5098		YT5060	YT 5099	YT5107				78			
YT 5010	YT5010-1		YT 5098		YT5060	YT 5099	YT5107				79			
YT 5013	YT5013-1		YT 5098		YT5060	YT 5099	YT5107				06			
YT 5017	YT5017-1		YT 5098		YT5060	YT 5099	YT5107				36	37		
YT 5019	YT5019-1		YT 5097		YT5060	YT 5099	YT5106				37			
YT 5020	YT5020-1*	YT5020-2		YT 5113	YT5060	YT 5099		YT 5119	YT 6087	YT 6088	50			
YT 5021	YT5021-1*	YT5021-2		YT 5125	YT5060	YT 5099		YT 5119	YT 6160	YT 6098	11	12		
YT 5026	YT5026-1		YT 5098		YT5060	YT 5099					51			
YT 5029	YT5029-1	YT5029-2		YT 5112	YT5060	YT 5099		YT 5119	YT 6180	YT 6088	15			
YT 5032	YT5032-1	YT5032-2		YT 5105	YT5060	YT 5099			YT 5049	YT 5050	79			
YT 5033	YT5033-1	YT5033-2		YT 5105	YT5060	YT 5099		YT 5119	YT 5049	YT 5050	90			
YT 5036	YT5036-1				YT5060	YT 5099	YT 5107				71			

Rocker Spares and Hardware

ROLLER ROCKER SPARES & HARDWARE



Arm ID no. is stamped on arm behind roller tip.

Set number	Single unit	Pair	Trunnion & Bearings	Shaft & Bearings	Bearing	Roller & Pin	Single Poly Lock	Adjuster & Locknut	Spacer or Pedestal	Mounting Bolt	ARM ID No	ARM ID No	ARM ID No	ARM ID No
YT 6000	YT6000-1*				YT5060	YT 5099		YT 5114			3A	4A		
YT 6008	YT5008-1	YT6008-2		YT 5125	YT5060	YT 5099		YT 5119	YT 6087	YT 6088	39	40		
YT 6009	YT6009-1*	YT6009-2		YT 5125	YT5060	YT 5099		YT 5119	YT 6087	YT 6088	81	82		
YT 6011	YT6011-1				YT5060	YT 5099		YT 5114			31			
YT 6015	YT6015-1		YT5103		YT5060	YT 5099		YT5115	YT 5044	YT 5045	34			
YT 6018	YT6018-1		YT5103		YT5060	YT 5099		YT5115	YT 5044	YT 5045	34			
YT 6023	YT6023-1*	YT6023-2			YT5060	YT 5099		YT 5114			16	17		
YT 6030	YT6030-1	YT6030-2		YT 5113	YT5060	YT 5099		YT 5119	YT 6087	YT 6088	50			
YT 6301			YT 5098		YT5060	YT 5099								
YT 6302					YT5060	YT 5099					24	25	26	
YT 6305	YT6026-1*				YT5060	YT 5099					03	04		
YT 6308	YT6308-1*	YT6308-2		YT 5126	YT5060	YT 5099		YT 5119	YT 6087	YT 6088	39	40		
YT 6309	YT6309-1	YT6309-2		YT 5105	YT5060	YT 5099		YT 5119	YT 5049	YT 5050	80			
YT 6312	YT6312-1	YT6312-2		YT 5112	YT5060	YT 5099		YT 5119	YT 6180	YT 6088	83			
YT 6313	YT6313-1*	YT6313-2			YT5060	YT 5099		YT 5119	YT 6594	YT 6088	50	59		
YT 6314	YT6314-1*	YT6314-2		YT 5127	YT5060	YT 5099		YT 5119	YT 6160	YT 6098	11	12		
YT 6317	YT6317-1		YT 5118		YT5060	YT 5099		YT 5119	YT 6230	YT 6098	0S			
YT 6318	YT6318-1		YT 5118		YT5060	YT 5099		YT 5119	YT 6230	YT 6098	0W			
YT 6321	YT6321-1		YT 5118		YT5060	YT 5099		YT 5119	YT 6230	YT 6098	0T			
YT 6323	YT6323-1*	YT6323-2		YT 5125	YT5060	YT 5099		YT 5119	YT 6160	YT 6098	2E	2F		
YT 6324	YT6324-1*	YT6324-2		YT 5125	YT5060	YT 5099		YT 5119	YT 6160	YT 6098	2Y	2Z		
YT 6325	YT6325-1*	YT6325-2		YT 5126	YT5060	YT 5099		YT 5119	YT 6087	YT 6088	81	82		
YT 6326	YT6326-1*	YT6326-2**		YT 5125	YT5060	YT 5099		YT 5119	YT 6087	YT 6088	0A	0B	0C	0D
YT 6327	YT6327-1*	YT6327-2**		YT 5125	YT5060	YT 5099		YT 5119	YT 6087	YT 6088	0I			
YT 6029	YT6029-1		YT 5098		YT5060	YT 5099	YT5107				09			
YT 6332	YT6332-1	YT6332-2			YT5060	YT 5099		YT 5119	YT 6180	YT 6088	98			
YT 6333	YT6333-1	YT6333-2		YT 5125	YT5060	YT 5099		YT 5119	YT 6093	YT 6088	99			
YT 6338	YT6338-1*	YT6338-2**		YT 5126	YT5060	YT 5099		YT 5119	YT 6087	YT 6088	81	82	1C	1D
YT 6340	YT6340-1*	YT6340-2**		YT 5126	YT5060	YT 5099		YT 5119	YT 6087	YT 6088	81	82	1E	1F
YT 6341	YT6341-1*	YT6341-2**		YT 5125	YT5060	YT 5099		YT 5119	YT 6087	YT 6088	1A	1B	1C	1D
YT 6342	YT6342-1*	YT6342-2**		YT 5126	YT5060	YT 5099		YT 5119	YT 6087	YT 6088	1C	1D	1E	1F
YT 6344	YT6344-1		YT 5118		YT5060	YT 5099		YT 5119	YT 6557	YT 6098	5T			
YT 6345	YT6345-1		YT 5118		YT5060	YT 5099		YT 5119	YT 6230	YT 6098	0T			
YT 6347	YT6347-1*				YT5060	YT 5099		YT 6176			1K	1L	1M	1N
YT 6355	YT6355-1				YT5060	YT 5099		YT 5119	YT 6586	YT 6098	5S			
YT 6356	YT6356-1				YT5060	YT 5099		YT 5119	YT 6586	YT 6098	5T			
YT 6357	YT6357-1				YT5060	YT 5099		YT 5119	YT 6586	YT 6098	5S	5T		
YT 6358	YT6358-1		YT 5118		YT5060	YT 5099		YT 5119	YT 6586	YT 6098	2C			
YT 6361	YT6361-1	YT6361-2		YT 5125	YT5060	YT 5099		YT 5119	YT 6093	YT 6088	7K			
YT 6370	YT6370-1	YT6370-2			YT5060	YT 5099		YT 5119	YT 6160	YT 6098	75	76	50	1I
YT 6371	YT6371-1	YT6371-2		YT 5112	YT5060	YT 5099		YT 5119	YT 6180	YT 6088	1H			
YT 6372	YT6372-1*	YT6372-2**			YT5060	YT 5099		YT 5119	YT 6160	YT 6098	50	10	1I	
YT 6385	YT6385-1				YT5060	YT 5099		YT 5122	YT 6230	YT 6098	3I			
YT 6601	YT6601-1*		YT 5118		YT5060	YT 5099		YT 5122	YT6230/ YT6263	YT6098/ YT6588	3I	3L		
YT 6603	YT6603-1*		YT 5118		YT5060	YT 5099		YT 5119	YT6230/ YT6263	YT6098/ YT6588	0S	3G		

ROLLER ROCKER SPARES & HARDWARE



Arm ID no. is stamped on arm behind roller tip.

Set number	Single unit	Pair	Trunnion & Bearings	Shaft & Bearings	Bearing	Roller & Pin	Single Poly Lock	Adjuster & Locknut	Spacer or Pedestal	Mounting Bolt	ARM ID No	ARM ID No	ARM ID No	ARM ID No
YT 6604	YT6604-1*				YT5060	YT 5099		YT 5119	YT6230/ YT6263	YT6098/ YT6588	OS	4J		
YT 6608	YT6608-1		YT 5097		YT5060	YT 6597	YT 5106				5A			
YT 6610	YT6610-1*	YT6610-2		YT 5125	YT5060	YT 5099		YT 5119	YT 6087	YT 6088	4N	4P		
YT 6611	YT6611-1*	YT6611-2		YT 5125	YT5060	YT 5099		YT 5119	YT 6087	YT 6088	4R	4S		
YT 6612	YT6612-1*	YT6612-2		YT 5125	YT5060	YT 5099		YT 5119	YT 6087	YT 6088	4T	4U		
YT 6613	YT6613-1*	YT6613-2**		YT 5125	YT5060	YT 5099		YT 5119	YT 6087	YT 6088	39			
YT 6615	YT6615-1*	YT6615-2**		YT 5125	YT5060	YT 5099		YT 5119	YT 6087	YT 6088	OK	OL	5B	5C
YT 6616	YT6616-1*	YT6616-2**		YT 5125	YT5060	YT 5099		YT 5119	YT 6087	YT 6088	OK	OL	5D	5E
YT 6618	YT6618-1*	YT6618-2**		YT 5125	YT5060	YT 5099		YT 5119	YT 6087	YT 6088	5I	5J	5K	5L
YT 6619	YT6619-1*	YT6619-2**		YT 5125	YT5060	YT 5099		YT 5119	YT 6087	YT 6088	5K	5L	5M	5N
YT 6620	YT6620-1*	YT6620-2		YT 5125	YT5060	YT 5099		YT 5119	YT 6087	YT 6088	4X	4Y		
YT 6621	YT6621-1*	YT6621-2**		YT 5125	YT5060	YT 5099		YT 5119	YT 6087	YT 6088	1A	1B	4X	4Y
YT 6622	YT6622-1*	YT6622-2**		YT 5125	YT5060	YT 5099		YT 5119	YT 6595	YT 6098	1C			
YT 6625	YT6625-1		YT5103		YT5060	YT 5099			YT 6559	STD	5R			
YT 6626	YT6626-1	YT6626-2			YT5060	YT 5099			YT 6650	YT 5047	6F			
YT 6627	YT6627-1	YT6627-2			YT5060	YT 5099			YT 6650	YT 5047	6F			
YT 6628	YT6628-1				YT5060	YT 5099			YT 6650	YT 5047	6G			
YT 6637	YT6637-1*	YT6637-2		YT 5125	YT5060	YT 5099		YT 5119	YT 6160	YT 6098	6I	6J		
YT 6638	YT6638-1	YT6638-2			YT5060	YT 5099		YT 5119	YT 6512	STD	6H			
YT 6639	YT6639-1	YT6639-2			YT5060	YT 5099		YT 5119	YT 6512	STD	7I			
YT 6640	YT6640-1	YT6640-2			YT5060	YT 5099		YT 5119	YT 6594	YT 6088	6P	6U		
YT 6644	YT6644-1*				YT5060	YT 5099		YT 5114	YT 6187	YT 6189	27	28	29	
YT 6645	YT6645-1	YT6645-2			YT5060	YT 5124			YT 6600	YT 5128	C			
YT 6646	YT6646-1	YT6646-2			YT5060	YT 5124			YT 6600	YT 5128	D			
YT 6649	YT6649-1		YT5103		YT5060	YT 5124			YT 7003	YT 5045	E			
YT 6650	YT6650-1		YT5103		YT5060	YT 5124			YT 7003	YT 5045	F			
YT 6651	YT6651-1		YT5103		YT5060	YT 5124			YT 7003	YT 5045	G			
YT 6655	YT6655-1	YT6655-2			YT5060	YT 5099			YT 6600	STD				
YT 6656	YT6656-1				YT5060	YT 5099			YT 7002	YT 6567	6Y			
YT 6657	YT6657-1				YT5060	YT 5099			YT 7002	YT 6567	6Z			
YT 6658	YT6658-1		YT5103		YT5060	YT 5099			YT 7001	YT 5050	6Y			
YT 6659	YT6659-1		YT5103		YT5060	YT 5099			YT 7001	YT 5050	6Z			
YT 6663	YT6663-1*	YT6663-2		YT 5113	YT5060	YT 5099			YT 6087	YT 6088	6T	6U		
YT 6666	YT6666-1*				YT5060	YT 5124			YT 7003	YT 5045	G			
YT 6667	YT6667-1	YT6667-2			YT5060	YT 5124			YT 6600	YT 5128	7T	7D		
YT 6668	YT6668-1	YT6668-2			YT5060	YT 5124			YT 6600	YT 5128	7T	7J		
YT 6669	YT6669-1		YT5103		YT5060	YT 5124			YT 7003	YT 5045	7Z			
YT 6670	YT6670-1				YT5060	YT 5124			STD	YT 5128				
YT 6678	YT6678-1		YT5097		YT5060	YT6597	YT 5106				5A			
YT 6685	YT6685-1	YT6685-2		# YT7009	YT5060	YT5124			YT6600	YT5128	S	V		

* Multiple arms in set, rocker arm ID number required to ensure correct supply.

** Multiple pair combinations in set, cylinder location or arm numbers required to ensure correct supply.

Refer to Yella Terra website for listing updates.

Rocker Spares and Hardware

YELLA TERRA BOLT ON PLATINUM SINGLE AND TWIN SHAFT ROCKER MOUNTING HARDWARE

SADDLES:

7/16" ID

Part number **height from base**

YT 6235 17.00mm [0.670"]

YT 6230 22.50mm [0.885"]

YT 6586 24.60mm [0.970"]

YT 6263 28.60mm [1.125"]

5/16" ID

YT 5044 14.10mm [0.555"]

YT 6559 11.40mm [0.450"]

YT 6575 12.40mm [0.487"]

YT 7003 12.40mm [0.487"]

YT 6571 13.60mm [0.535"]

YT 7001 13.60mm [0.535"]

3/8" ID

YT 6572 13.60mm [0.535"]

YT 7002 13.60mm [0.535"]

SPACERS: 5/16" ID

Part number **height from base**

YT 6550 9.75mm [0.383"]

YT 6227 12.60mm [0.495"]

YT 5049 15.00mm [0.590"]

YT 6592 19.60mm [0.770"]

YT 6591 21.00mm [0.826"]

ADJUSTMENT SHIMS

Peanut shape 7/16" ID

Part number **thickness**

YT 6239 .025" (Black)

YT 6140 .050" (Gold)

YT 6241 .100" (Silver)

Round 7/16" ID

YT 6579 .025"

YT 6279 .085"

YT 6580 .100"

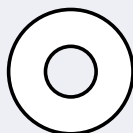
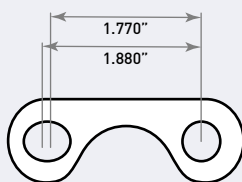
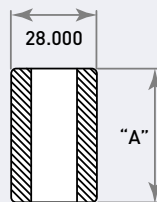
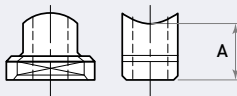
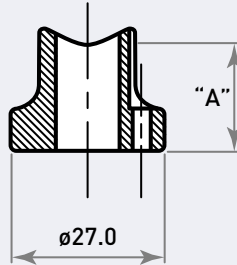
YT 6581 .150"

YT 6582 .200"

Round 8.00mm & 5/16" ID

YT 6578 .020"

YT 5041 .047"



PEDESTALS:

7/16" ID

Part number **height from base**

YT 6093 18.00mm [0.708"]

YT 6594 20.00mm [0.785"]

YT 6180 23.00mm [0.905"]

YT 6087 25.00mm [0.985"]

YT 6160 28.70mm [1.130"]

YT 6595 30.00mm [1.180"]

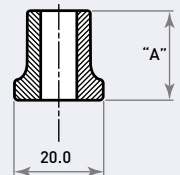
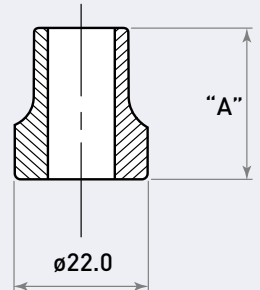
5/16" & 8.0MM ID

YT 6600 18.50mm [0.725"]

YT 6512 20.00mm [0.787"]

YT 7005 22.20mm [0.874"]

YT 7011 25.00mm [0.985"]



CAPSCREWS:

7/16"

Part number **under head length**

YT 6088 2"

YT 6098 2 1/4"

YT 6588 2 1/2"

3/8"

YT 6567 1 3/4"

5/16"

YT 5108 1"

YT 5047 1 1/2"

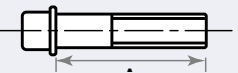
YT 5050 1 3/4"

YT 5045 2"

8.0mm

YT 5128 45.00mm

YT 5129 50.00mm



NOTE: Dimension "A" = Sizes Listed

ADJUSTING SCREWS & NUTS:

3/8" UNF

Part number **under head length**

YT 6161 24mm cross hole

YT 6206 24mm thru hole

YT 6565 26mm thru hole H/D

YT 6061 29mm thru hole

YT 6564 30mm thru hole H/D

YT 6169 24mm cross hole H/D

3/8" UNF Lock Nuts

YT 6590 single hex 4.1mm

YT 6163 single hex 6mm

YT 6563 double hex 6mm